

SAFSO™

make it long-lasting



ROBUST ▶ DURABLE ▶ FLEXIBLE
BUILDING CONSTRUCTION CHEMICALS



WE AT SAFSO!

SAFSO Chemical is an elite manufacturer of construction chemicals. The SAFSO Chemical brand has become a symbol of ability, stability, and durability in the construction industry. SAFSO Chemical, headquartered in Morbi, has been supplying high-quality chemical construction solutions to industries.

SAFSO Chemical has diversified its business in the construction and design fraternity because certain design advantages can be derived from our extensive product line of Construction Chemicals such as Tile Adhesive, Tile Grout, Epoxy Grout, Waterproofing, Sealers, Wall Putty and Plaster.

We invent, produce, and install specialty building chemicals to improve people's lives by protecting and enhancing the quality of man-made structures around the world.

VISION

Our Vision is to be among the leaders in construction chemical industry by delivering 100% high quality products.

MISSION

Our mission is to provide complete solution for construction industry.



IGBC

NSA - SILVER (Grey)
POLYMER MODIFIED CEMENT BASE ADHESIVE

Product Description
FLOOR AND WALL THIN-SET ADHESIVE

NSA - SILVER is a smooth and creamy thin-set adhesive for installing small to medium format ceramic tiles, Vitrified tiles & natural stones wall and floor in interior areas. For improved performance and exterior use, with **SAFSO LATEX ADDITIVE**

Application
Applying ceramic wall tiles on wall internally, applying vitrified tiles on floor
(600 mm x 600 mm,
600 mm x 1200 mm, 800 mm x 800 mm &
800 mm x 1200 mm) Applying floor tiles on floor
(300 mm x 300 mm, 400 mm x 400 mm)

Shelf life & Storage:
Shelf life is 12 months from the date of manufacturing in unopened condition.
Store in a cool and dry place.

Mixing Ratio
20 kg. of **NSA - SILVER** Powder will require approximately 5 Litres to 6 Litres of clean drinking water.

Coverage
Approx. 40-50 sq. ft. per 20 kg. bag with (6 mm x 6 mm) Notch trowel for a bed thickness of 3mm

Note: The coverage will vary depending on surface undulations & size of tiles/stone.



Advantages

- ▶ High-Bond adhesion strength
- ▶ Easy to Apply
- ▶ Dual purpose for floor and wall installation with good adhesion and workability
- ▶ Extended open time
- ▶ Increased Flexibility
- ▶ Self - Curing

Suitable Substrates

- ▶ Concrete wall and floor areas
- ▶ Cement Mortar Beds
- ▶ Cement plaster
- ▶ Brick Masonry
- ▶ Cement Terrazzo

Technical Information:

PROPERTIES	RESULTS
Appearance	Free Flowing Powder
Colour	Grey
Pot Life @ 35° c, minutes	35 to 45
Open Time, minutes	20
Adjustability Time, minutes	20
Traffic able Time, hrs.	24
Shear Adhesion Strength, 14 Day	1.1 to 1.50 N/MM ²
Tensile Adhesion Strength, 14 Days	≥1275 N force
EN 12004 Standards	C1



Packing : 20 kg

NSA - GOLD (Grey)
POLYMER MODIFIED CEMENT BASE ADHESIVE

Product Description

NSA - GOLD is a premium quality, polymer modified, and multi-purpose thin-set adhesive for fixing Vitrified tiles, natural stone and marble, glass brick wall, swimming pool tiles, on variety of interior and exterior substrates for wall and floor applications.

For Heavy tiles and stone apply Exterior use, with **SAFSO LATEX ADDITIVE**

Application

Applying Tiles on Tiles, Applying ceramic wall tiles on wall internally, applying vitrified tiles on Wall (600 x 600mm, 600 x 1200mm 800 x 800mm & 800 x 1200mm)

Shelf life & Storage:

Shelf life is 12 months from the date of manufacturing in unopened condition. Store in a cool and dry place.

Mixing Ratio

20 kg. Add 5 Ltr. to 6 Ltr. of clean drinking water.

Coverage Approx

40-50 sq. ft. per 20 kg. bag with (6 mm x 6 mm) Notch trowel for a bed thickness of 3 mm

Note: The coverage will vary depending on surface undulations & size of tiles/stone.



Advantages

- ▶ Multipurpose Hi - polymer modified thin - set adhesive
- ▶ Hi-bond strength for exterior application of various tiles and Natural stones
- ▶ Highly flexible yet strong on bond strength adhesive
- ▶ Self-curing
- ▶ Economical & Easy to use

Suitable Substrates

- ▶ Cement plaster
- ▶ Brick Masonry
- ▶ Ceramic, Vitrified tiles and Stone
- ▶ Cement Terrazzo
- ▶ Gypsum wall board (For Interior)

Technical Information:

PROPERTIES	RESULTS
Appearance	Free Flowing Powder
Colour	Grey/White
Pot Life @ 35° c, minutes	35 to 45
Open Time, minutes	20
Adjustability Time, minutes	20
Traffic able Time, hrs.	24
Shear Adhesion Strength, 14 Day	≥1.25 N/MM ²
Tensile Adhesion Strength, 14 Days	≥1550 N
EN 12004 Standards	C1TE



Packing : 20 kg

NSA - DIAMOND (Grey)
POLYMER MODIFIED CEMENT BASE ADHESIVE

Product Description
NSA DIAMOND is a premium quality, polymer modified, and multi-purpose thin-set adhesive for fixing Vitrified tiles, natural stone and marble, glass brick wall, swimming pool tiles, on variety of interior and exterior substrates for wall and floor applications

For Heavy tiles and stone apply Exterior use, with **SAFSO LATEX ADDITIVE**

Application
Applying Tiles on Tiles, Applying ceramic wall tiles on wall internally, applying vitrified tiles on Wall (600 mm x 600 mm, 600 mm x 1200 mm 800 mm x 800 mm & 800 mm x 1200 mm)

Self life & Storage
Self life is 12 months from the date of manufacturing in unopened condition. Store in a cool and dry place.

Mixing Ratio
20kg. Add 5 Litres to 6 Litres of clean drinking water.

Coverage
Approx. 40-50 sq. ft. per 20kg. bag with (6 mm x 6 mm)
Notch trowel for a bed thickness of 3mm

Note: The coverage will vary depending on surface undulations & size of tiles / stone.



- Advantages**
- ▶ Hi - polymer modified thin-set adhesive
 - ▶ Hi-bond strength for exterior application of various tiles and Natural stones
 - ▶ Highly flexible yet strong on bond strength adhesive
 - ▶ Self-curing
 - ▶ Economical & Easy to use

- Suitable Substrates**
- ▶ Concrete, concrete mortar beds
 - ▶ Brick Masonry
 - ▶ Ceramic, Vitrified tiles and Stone
 - ▶ Cement Terrazzo
 - ▶ Gypsum wall board (For Interior)

Technical Information:

PROPERTIES	RESULTS
Appearance	Free Flowing Powder
Colour	Grey/White
Pot Life @ 35° c, minutes	35 to 45
Open Time, minutes	30
Adjustability Time, minutes	25
Traffic able Time, hrs.	24
Shear Adhesion Strength, 14 Day	≥1.5 N/MM ²
Tensile Adhesion Strength, 14 Days	≥1680 N
EN 12004 Standards	C2TE



Packing : 20 kg

NSA-PLATINUM (White)
POLYMER MODIFIED CEMENT BASE ADHESIVE

Product Description

NSA PLATINUM is a premium quality, polymer modified, and multi-purpose thin-set adhesive for fixing glass mosaic, glass brick wall, and swimming pool tiles, marble and natural stones on variety of interior and exterior substrates for wall and floor applications

For Heavy tiles and stone apply Exterior use, with **SAFSO LATEX ADDITIVE**

Application

Applying vitrified slabs Wall externally
1600 mm x 3200 mm, 1200 mm x 2400 mm
750 mm x 1500 mm
Applying vitrified tiles on wall externally
600 mm x 1200 mm, 800 mm x 1600 mm
800 mm x 2400 mm & 800 mm x 3200 mm
Applying natural stone, marble, granites on wall

Shelf life & Storage

Shelf life is 12 months from the date of manufacturing in unopened condition. Store in a cool and dry place

Mixing Ratio

20 kg. Add 5 Ltr. to 6 Ltr. of clean drinking water

Coverage

Approx. 40-50 sq. ft. per 20 kg. bag with (6 mm x 6 mm)
Notch trowel for a bed thickness of 3 mm

Note: The coverage will vary depending on surface undulations & size of tiles/stone:



Advantages

- Hi - polymer modified thin-set adhesive
- Hi-bond strength for exterior application of various tiles and Natural stones
- Highly flexible yet strong on bond strength adhesive
- Self-curing
- Economical & Easy to use

Suitable Substrates

- Concrete mortar beds
- Cement Plaster
- Brick Masonry
- Ceramic, Vitrified tiles and Stone
- Cement Terrazzo
- Gypsum wall board (For Interior)

Technical Information:

PROPERTIES	RESULTS
Appearance	Free Flowing Powder
Colour	White/Grey
Pot Life @ 35° c, minutes	45 to 60
Open Time, minutes	40
Adjustability Time, minutes	30
Traffic able Time, hrs.	24
Shear Adhesion Strength, 14 Day	≥1.6 N/MM ²
Tensile Adhesion Strength, 14 Days	≥2250 N
EN 12004 Standards	C2TES1



Packing : 20 kg

TILE GROUT (One Pack)
POLYMER MODIFIED CEMENT BASE GROUT

Product Description
SAFSO TILE GROUT is a superior quality and higher polymer modified cementitious tile grout used for interior and exterior application. It is suitable for grouting ceramic tiles, vitrified tiles, marbles, Pavers and natural stone in wall and floor areas. For better performance it is recommended to use tile grout with **SAFSO LATEX ADDITIVE** mixture.

Application
Filling tile grouting 1 mm to 4 mm in both interior and exterior areas. (Kitchens, Bathrooms, Balconies, Terraces, Swimming-pools, Showrooms. etc.)

Mixing Ratio
Use approx. 300 ml to 400 ml of water or Latex Additive mixture for 1 kg. of Tile Grout.

Coverage
Varies with tile size and grout width.

Shelf life & Storage
Shelf life is 12 months from the date of manufacturing in unopened condition. Store in a cool and dry place.

Advantages

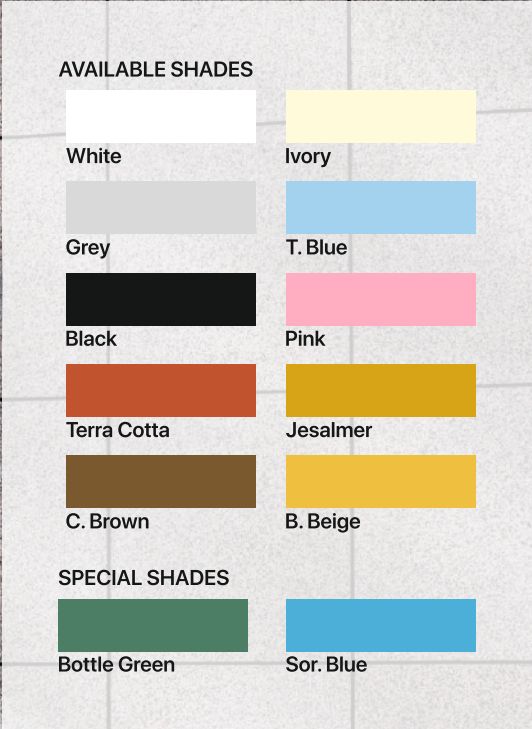
- ▶ Colour-fast
- ▶ Easy to mix, apply and clean up
- ▶ Smooth & glossy finish
- ▶ Water resistant formation
- ▶ Mold resistance
- ▶ Non-cracking

Methods & Site conditions Cleaning

- ▶ Clean and remove any loose particles
- ▶ Make sure that the tiles joints are clean and saturated and excess water is removed from joints before grouting

Technical Information:

PROPERTIES	RESULTS
Pot Life @ 30° c, minutes	60
Open Time, minutes	30
Resistance to Abrasion	≤2000 mm ³
Flexural Strength after 28 Days, MPa	≥2.5 MPa
Compressive Strength after 28 Days MPa	≥15 MPa
Shrinkage%	≤3 mm/m
Water Absorption, %	8.3
Adjustability Time, hours	12 to 24



Packing : 1 kg

EPOXY GROUT (3 Parts) HIGH PERFORMANCE EPOXY GROUT

Product Description

SAFSO Epoxy Grout is specifically designed for use in application of ceramic tiles, vitrified tiles, marble, glass mosaic tiles and stone where staining is expected

SHADES

36 SHADE AVAILABLE IN DIFFERENT COLOUR

33 SHADE AVAILABLE IN GLITTER

(11-GOLD, 11-SILVER, 11-COPPER)

Coverage

Varies with tile size and grout width.

Unit consisting of three conveniently packed components - Resin & Hardener (Part A & B) and coloured filler Powder (Part C).

Kit	Filler	Resin	Hardener
5 kg	3.5 kg	1 kg	500 gm
1 kg	700 gm	200 gm	100 gm

Advantages

- Kitchens/Bathrooms
- Swimming Pools
- Hospitals/Laboratories
- Spa & Sauna
- Water bodies
- Industrial Application

Suitable Substrates

- Easy to apply and clean
- Colour - fast & 100% Stain free
- Acid/ Chemical Resistant
- Non-Cracking or Powdering
- Anti-Fungal, Anti- Bacterial
- Available in Range of attractive Colors

Technical Information:

PROPERTIES	RESULTS
Pot Life @ 30° c, minutes	60
Resistance to Abrasion	≤250 mm ³
Compressive Strength after 7 Days	>50 MPa
Flexural Strength after 7 Days	>30 MPa
Shear Adhesion Strength After 14 Days	≥30 KN
Water Absorption	≤0.1 g
Pull-off Adhesion Strength	≥1.5 MPa (Concrete Failure)
Total VOC Content (EPA 24 Method)	<8 gm/kg



01 Silver Shadow



02 Sandstone



03 Marble Beige



04 Smoke Grey



05 Natural Grey



06 Platinum



07 State Grey



08 Light Grey



09 Hamp



10 Antique White



11 Parchment



12 Sauterne



13 Ivory



14 Silk



15 Burgundy



16 Raven



17 Mocha



18 Black



19 Olive Green



20 Inca Gold



21 Jaisalmer



22 Sterine Silver



23 Sierra Sunrise



24 Quarry Red



25 Orange



26 Buff



27 Canyon Red



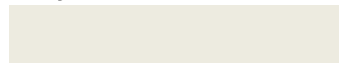
28 Mayan Red



29 Terracotta



30 Light Green



31 Bright White



32 Violet



33 Sky Blue



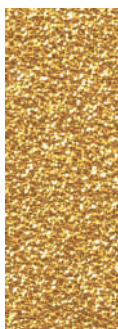
34 Blue



35 Sapphire Blue



36 Navy Blue



GOLD



107 State Grey



108 Light Grey



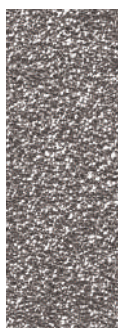
113 Ivory



115 Burgundy



118 Black



SILVER



207 State Grey



208 Light Grey



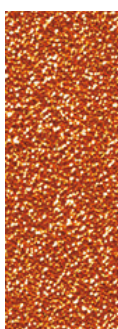
213 Ivory



215 Burgundy



218 Black



COPPER



307 State Grey



308 Light Grey



313 Ivory



315 Burgundy



318 Black



119 Olive Green



123 Sierra Sunrise



124 Quarry Red



126 Buff



127 Canyon Red



134 Blue



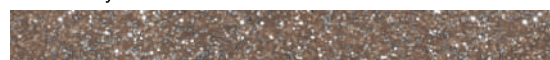
219 Olive Green



223 Sierra Sunrise



224 Quarry Red



226 Buff



227 Canyon Red



234 Blue



319 Olive Green



323 Sierra Sunrise



324 Quarry Red



326 Buff



327 Canyon Red



334 Blue

EPOXY GROUT COLOUR SHADE

- Grout shades are approximate guides only
- Verify actual appearance and compatibility with a test area before installation commences
- Actual shades and texture will depend on job site condition
- There may be a shade variation in different batches, it is advised to mix grout from different batches to get uniform color
- Quantities shown are approximate and are given for estimating purpose only
- Actual job site coverage's may vary
- It is always good practice when calculating coverage to allow for 10 to 15% additional material for wastage and spillage.

Approximate Sq. Ft. Coverage Per 5 Kg. SAFSO Epoxy Grout

in mm	2mm	3mm	4mm	6mm	8mm	10mm	12mm
100x100x3	264	177	133	90	68	55	46
150x150x4	296	198	149	100	75	61	51
200x150x4	269	181	136	91	69	55	46
150x300x6	263	175	132	88	66	53	44
300x300x6	394	263	198	132	100	80	67
450x300x7	405	270	202	135	101	81	68
600x450x8	506	337	253	169	127	101	85
600x600x8	591	394	295	197	148	119	99
600x900x11	515	343	258	171	129	103	86
900x900x12	590	393	295	197	148	118	99

Theoretical Coverage Calculation.

$$\frac{(\text{Tile Length} + \text{Tile Breadth}) \times \text{Tile Thickness} \times \text{Joint Width} \times \text{Specific Gravity}^*}{(\text{Tile Length} + \text{Joint Width}) \times (\text{Tile Breadth} + \text{Joint Width})} = \text{Kg/m}^2$$

Note: *Specific Gravity= 1.75

All The Dimensions Are in mm

SBR - LATEX



Packing : 500 ml, 5 & 1 ltr

SBR LATEX
FOR REPAIRS AND WATER PROOFING

Product Description
SAFSO SBR LATEX is based on modified styrene butadiene latex supplied as a ready to use bonding agent in liquid consistency. It bonds old & new concrete and plasters. It reduces shrinkage, prevents cracking, dust pick up & improves abrasion resistance

- Areas of Application**
- ▶ **Concrete repairs:** Spalled concrete, columns, beams, chajja, slabs, parapets, etc.
 - ▶ **Waterproofing:** Small roof, sunken portions of toilets-bathrooms, chajja, lift pits, balconies
 - ▶ **As a bond coat:** For bonding of new to old concrete, masonry stone work, plastering.
 - ▶ **Cladding:** Fixing or re-fixing of slip bricks, tiles, stones & marble bedding.
 - ▶ **As external rendering:** Weatherproof & frost resistant render.
 - ▶ **As bonding slurry coat:** For pinhole treatment on concrete surface.

Coverage
As a waterproofing coating 22-25 sq. ft./kg in 2 coats, As a mortar modifier 6-7.5 kg of SAFSO SBR LATEX per 50 kg of cement As a bonding agent 45-50 sq. ft./kg per coat.

Technical Information:	
PROPERTIES	RESULTS
Type	Styrene Butadiene Polymer Liquid
Colour	White
Specific Gravity	1.02+0.02
Storage Condition	Free From Frost
Solid Content	40 % to 50 %
Hard Dry	5 to 6 Hours
For Best Result	Use Before 1 Year if Unopened
Proportion Mix 1:4:7	SBR Latex : Water : Cement

GROUT ADMIXTURE
LETEX ADMIX

Product Description
Grout Admixture is specially designed Latex Admix to be used with Sanded & Unsanded Grout

Applications
Its improves the performance of portland cement grouts for all type of ceramic tile, bricks, marble, natural stone and agglomerate stone

Coverage
Varies by applications

Advantages

- ▶ Colour-fastness
- ▶ Flexibility
- ▶ Compressive Strength
- ▶ Shock and Chemicals Resistance
- ▶ Reduces water absorption
- ▶ Easy to clean

Technical Information:	
PROPERTIES	RESULTS
Physical Apperance	White Liquid
Specific Gravity	0.955
Solid Content	20.5%
Odour	Medium



Packing : 200 ml

GROUT ADMIXTURE

TILE CLEANER



Packing : 500 ml, 5 & 1 ltr

TILE CLEANER
GENERAL PURPOSE TILE CLEANER

Applications
Interior & Exterior & Wall & Floor
A Powerful, Heavy duty, Acid-based cleaner for ceramic and vitrified tiles - wall and floor. The cleaner can be used as general purpose cleaner on other acid resistant surface.

Coverage
Coverage depends on the poposity of the surface, stains, dilution etc.

Note: Do not use on surface that are not resistant to acid such as naturel stones, terrazzo and CP fittings.

Applications

Interior & Exterior
Wall & Floor

- Advantages**
- ▶ Powerful formula
 - ▶ Fast acting
 - ▶ Easy to apply
 - ▶ Removes cement film
 - ▶ Ideal for interior & exterior areas

TILES EQUALIZER



Packing : 1 tool & 50 pcs.

TILES EQUALIZER (Reusable) TILES LEVELING AND EQUALIZING SURFACE

Applications
Walls & Floors, Interiors & Exteriors, Dry & Wet areas, Showers, Swimming pools

Product Details
Levelling system is an innovative product that will greatly assist most anyone in the installation of stone, ceramic, marble, granite and large format slab files. It is designed to create virtual lip page free installation when used on floor or wall

The interlocking design of the system reduces and in most cases eliminates settling from shrinkage, as well as minimizing the possibility of warping. The system reduces the need to re-lift tiles to add more mud and or the process of shimming tiles, thus greatly increasing the speed of installation, all the while creating that much desired lip page free mirror surface in addition, the caps are reusable dozens of times

Advantages

- ▶ Specially angled pliers for use on floor
- ▶ Sturdy steel construction with adjustable tension
- ▶ Tiles are pushed, not lifted, providing better tile adhesion
- ▶ Most economical tile levelling system
- ▶ Improves speed of tile laying

Demand Quantity (Clip/m²)

Size/Area	1'm	2'm	5'm	10'm	20'm	50'm
30x30 cm	12	24	60	120	240	600
40x40 cm	25	50	125	250	500	1250
50x50 cm	15	30	75	150	300	750
30x60 cm	18	36	90	180	360	900
60x60 cm	12	20	50	100	200	500
80x80 cm	10	20	45	80	140	360

TILES SPACER FOR CONSISTENT AND EVEN SPACING OF TILES

Product Description
At the most basic level, spacer have a pretty simple purpose: they will allow you to keep the tiles at equal distance, enabling you to space them correctly and get a symmetrical result. However, their benefits don't stop here. Here's how spacer can make your life easier and ensure that the installation process goes a bit smoother than before

Method of Application
If you plan to undertake tile installation at home, be sure to obtain some tile spacer for your project. Spacers are small cross-like or t-shaped pieces of plastic, ceramic or wood which help you to space your tiles apart in equal distances. They come in various sizes, although most commonly used spacers range in with from 1/4 to 3/8 of an inch

To use spacers, you need to lay 4 tiles at a time on the work surface. you place the spacers at the corners of each tile and then push the tiles together until they can go no further. Once you complete your tile installation, you can remove the spacer and save them for future project. Spacer can help you to accomplish a well installed and attractive tile arrangement on floor walls or counter tops in your home

Advantages

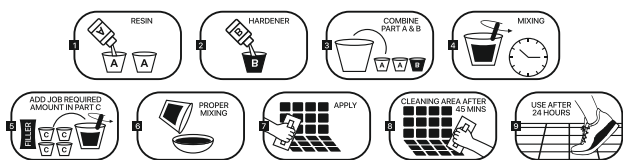
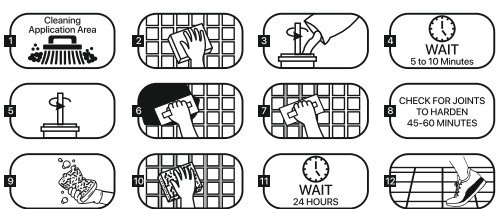
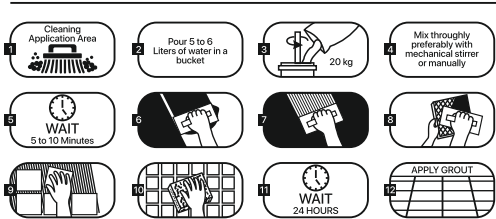
- ▶ Specifically angled pliers for use on floor
- ▶ Sturdy steel construction with adjustable tension
- ▶ Tiles are pushed, not lifted, providing better tile adhesion
- ▶ Improves speed of tile laying
- ▶ The most economical tile levelling system



Packing : 100 pcs. per packet

TILES SPACER

HOW TO APPLY?



METHOD OF INSTALLATION : TILES & STONE ADHESIVE

Mixing Ratio

- ▶ 20 kg. of Adhesive Powder will required approximately 5 Ltr. to 6 Ltr. of clean drinking water
- ▶ Slowly and adhesive powder into a clean bucket with the measure water. Slowly mix with a drill & quality mixing paddle to ensure a smooth lump free tooth paste consistency
- ▶ Leave the mix for 5 to 10 min. then re-stir. The adhesive is now ready for use

Cleaning

- ▶ Clean tools and tile work with water while adhesive is fresh
- *The powder - Liquid ratio may vary according to job conditions

CLEANING

- ▶ Clean and remove any loose particles
- ▶ Make sure that the tiles joints are clean and saturated and excess water is removed from joints before grouting

METHOD OF INSTALLATION: PREMIUM EPOXY GROUT

- ▶ All Surface must be clean & remove any excess particles
- ▶ Do not mix with other chemicals
- ▶ Clean the tile surface with water & soap solution after 12-24 hours of grouting to remove epoxy haze



Manufactured & Marketed By:

SAFSO CHEM INDUSTRIES

Juna Sadulka, S.No.307 P-1, Plot No-7,
Amarnagar, Morbi - 363 642 (Guj) INDIA

email : info@safsochemindustries.com
web : www.safsochemindustries.com

Customer Care No.
+91 97732 46460